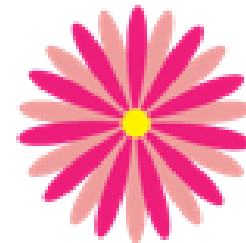




Flowers



DO YOU KNOW THESE?
TALK ABOUT THEM IN
YOUR GROUP.



Geranium



Sweet William



A top-down view of a dense field of marigold flowers. The flowers are in various stages of bloom, showing a range of colors from bright yellow to deep orange and red. The green foliage is lush and fills the background between the flowers.

Marigold

A close-up photograph of a large cluster of bright pink impatiens flowers. The flowers are in various stages of bloom, with some fully open and others as buds. The petals are a vibrant, uniform pink color. The background is filled with lush green foliage, including small, rounded leaves and thin stems. The overall appearance is that of a healthy, flowering plant.

Impatiens

Snapdragon



Avens, Mountain



Primrose



Cleome





Marguerite daisies



Peony

A close-up photograph of a bouquet of bright yellow sunflowers. The flowers are in various stages of bloom, with some showing their dark brown, textured centers. The petals are a vibrant yellow, and the green leaves are interspersed among the flowers. The background is dark and out of focus.

Sunflowers

Cosmos



Sweet peas






Zantedeschias



Nasturtium



Yellow Iris

A close-up photograph of numerous chrysanthemum flowers. The flowers are in various stages of bloom, showing a range of colors from bright yellow centers to deep red and orange petals. The background is dark and out of focus, making the flowers stand out prominently. The overall composition is a dense, textured field of these autumnal blooms.

Chrysanthemum

Foxglove



Calibrochoa



Bacopa



Agapanthus



A photograph of a field of orange tulips. The tulips are in various stages of bloom, with some fully open and others as buds. The background is a dense field of green leaves and more tulips, creating a soft, out-of-focus effect. The lighting is natural, highlighting the texture of the petals.

Tulips

Crocosmia Lucifer



Daffodils



Asiatic Lily



Dahlias



A photograph of a forest floor covered in a dense carpet of bluebells. The flowers are a vibrant blue color, interspersed with green foliage. In the background, several tall, slender tree trunks stand against a backdrop of lush green leaves. The lighting is soft and natural, suggesting a shaded woodland environment.

Bluebells

Geranium Cinereum



Roses



Blue Delphinium



Cowslip



Anemone



Allium





Lily of the Valley



Lupin

A close-up photograph of a Potentilla Fruticosa 'Elizabeth' plant. The image shows a dense cluster of bright yellow flowers with five petals each, interspersed with green, serrated leaves. The background is a soft-focus green, suggesting a garden setting. The text 'Potentilla Fruticosa 'Elizabeth' Plant' is overlaid in white on the left side of the image.

Potentilla Fruticosa 'Elizabeth' Plant



Hydrangea

Magnolia



Pansy



Crocus



Echinacea



